

Quick Start

AC750 WiFi Range Extender

Model EX6100



NETGEAR®

Getting Started

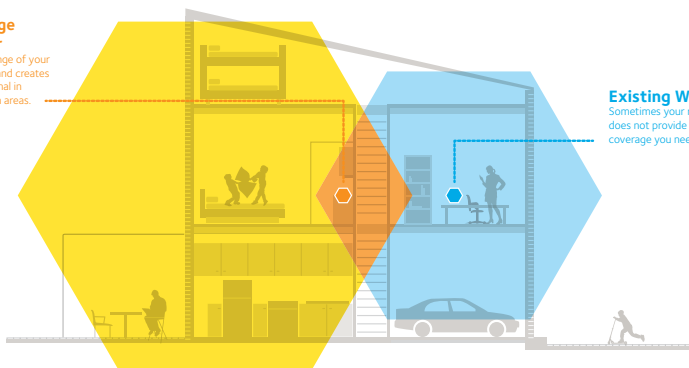
The NETGEAR WiFi Range Extender increases the distance of a WiFi network by boosting the existing WiFi signal and enhancing the overall signal quality over long distances. An extender repeats the signals from an existing WiFi router or access point.

WiFi Range Extender

Boosts the range of your existing WiFi and creates a stronger signal in hard-to-reach areas.

Existing WiFi

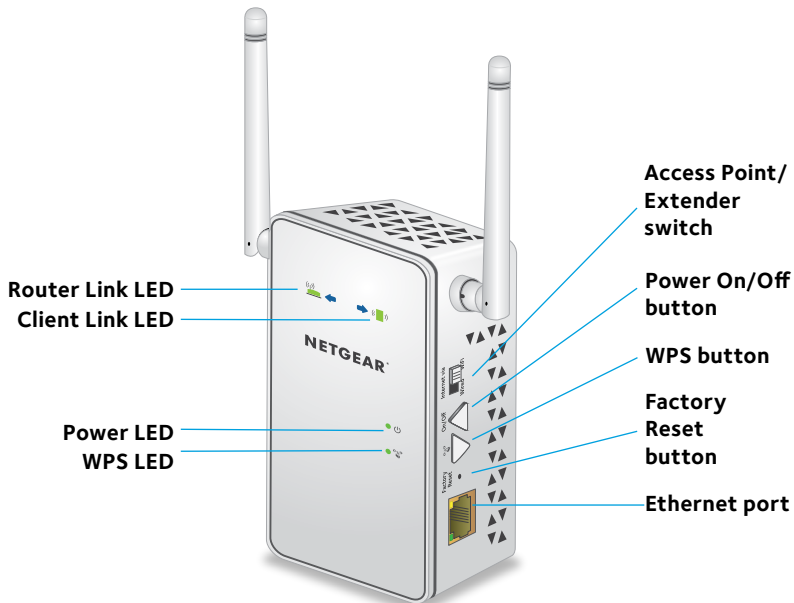
Sometimes your router does not provide the WiFi coverage you need.



Meet Your Extender

Before you install your extender, familiarize yourself with its LEDs, buttons, and port.

Front and Side Panel



LED Descriptions

Router Link LED This LED indicates the connection between the extender and a router or access point.



Solid green. Best connection.

Solid amber. Good connection.

Solid red. Poor connection.

Off. No connection.

Client Link LED This LED indicates the connection between the extender and a computer or WiFi device.



Solid green. Best connection.

Solid amber. Good connection.

Solid red. Poor connection.

Off. No connection.

Power LED **Solid amber.** The extender is booting.



Solid green. The extender is powered on.

Off. The extender is powered off.

WPS LED **Solid green.** WiFi security is enabled (WPA or WPA2).





Blinking green. A WPS connection is being established.

Off. WiFi security is not enabled.

Use the Extender in Extender Mode

The extender repeats signals from an existing WiFi router or access point. Place the extender, apply power, and connect it to your WiFi network.

Place the Extender and Apply Power

1. Set the **Access Point/Extender** switch  to the **Extender** position.
2. Place your extender in the same room as your WiFi router. Proximity to the WiFi router is required only during initial setup.
3. Plug the extender into an electrical outlet. Wait for the Power LED  to light green.
4. If the Power LED does not light, press the **Power On/Off** button on the extender.

Connect to an Existing WiFi Network

To extend the range of your WiFi network, you must connect the extender to your existing WiFi network. You can do this in one of two ways:

- **Connect with WPS.** For more information, see *Connect with WPS on page 6*.
- **Connect with web browser setup.** For more information, see *Connect with Web Browser Setup on page 8*.

Connect With WPS


Wi-Fi Protected Setup (WPS) lets you join a secure WiFi network without typing the network name and password.

Note: WPS does not support WEP network security. If you are using WEP security, follow the instructions in *Connect with Web Browser Setup on page 8*.

1. Press the **WPS** button on the side panel of the extender.

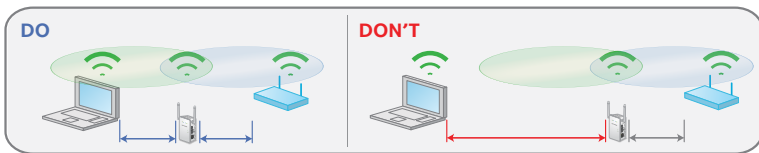
The WPS LED  blinks.



2. Within two minutes, press the **WPS** button on your router or access point.

When the extender connects to your existing WiFi network, the WPS LED on the extender lights solid green and the Router Link LED  lights. If the Router Link LED does not light, try again. If it still does not light, see *Connect with Web Browser Setup on page 8*.

3. If your WiFi router supports the 5 GHz band, repeats Steps 1 and 2 to connect the extender to the 5 GHz band.
4. Unplug the extender and move it to a new location that is about halfway between your router and the area with a poor router WiFi signal.

The location that you choose must be within the range of your existing WiFi router network.




5. Plug the extender into an electrical outlet and wait for the Power LED  to light green.
6. Use the Router Link LED  to help you choose a spot where the extender-to-router connection is optimal.
7. If the Router Link LED does not light amber or green, plug the extender into an outlet closer to the router and try again.
Keep moving the extender to outlets closer to the router until this LED lights amber or green.
8. On your computer or WiFi device, find and connect to the new extended WiFi network.

The extender creates a new extended WiFi network. The extender's new WiFi network names are based on your existing WiFi network name, with _EXT at the end of the name.

For example:

- **Existing WiFi network name.** MyNetworkName
- **New extended WiFi network names.** MyNetworkName_2GEXT and MyNetworkName_5GEXT.


Use the same WiFi password that you use for your WiFi router.

9. Test the extended WiFi range by moving your computer or WiFi device to the area with a poor router WiFi signal:
 - a. Leave your computer or WiFi device in the area with a poor router WiFi signal and return to the extender.
 - b. Check the Client Link LED () on the extender:
 - If the Client Link LED is solid green or amber, your extended WiFi network reaches the area with a poor router WiFi signal and your network setup is complete.
 - If the Client Link LED is red, your extended WiFi network does not reach the area with a poor router WiFi signal.

You must move the computer or WiFi device closer to the extender until the Client Link LED turns solid green or amber.

Connect With Web Browser Setup

1. Use a WiFi network manager on a computer or mobile device to find and connect to the extender WiFi network
EX6100_NETGEAR_2GEXT.

After the connection with the computer or WiFi device is established, the Client Link LED () lights.
2. Launch a web browser.
3. Enter **www.mywifiext.net** in the address field of the browser.

The New Extender Setup page displays.

4. Click the **NEW EXTENDER SETUP** button.

The Create Account page displays.

5. Complete the fields on the page to set up your login credentials and click the **NEXT** button.
6. Verify that the **Access Point/Extender** switch is set to **Extender** and click the **Continue** button.
7. Select a WiFi network to extend and click the **NEXT** button.

If you do not want to extend both WiFi bands, clear the **2.4 GH WiFi Networks** or **5 GHz WiFi Networks** check box.

8. In the **Password (Network Key)** field, type the existing WiFi network passphrase (also called the passphrase or security key) and click the **NEXT** button.
9. Set the network name (SSID) and password for your extender and click the **NEXT** button.

Wait for the page to display a list of available extended WiFi networks, which might take up to one minute.

10. Use a WiFi network manager on the computer or WiFi device to connect to the new extended WiFi network.

You must connect your computer or WiFi device before you click the **Continue** button.

11. Click the **Continue** button.

A message displays confirming that the extender is connected and ready.

12. Click the **Next** button.

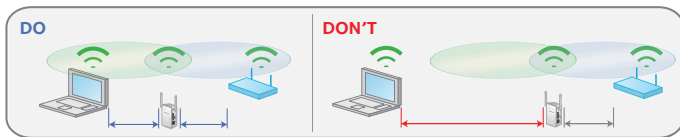
The registration page displays.

13. Complete the registration fields and click the **Finish** button to complete the setup.

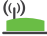

If you do not want to register your extender, click the **Skip Registration** link. Note that you must register your extender before you can use NETGEAR telephone support.

The Status page displays.

14. Unplug the extender and move it to a new location that is about halfway between your router and the area with a poor router WiFi signal.

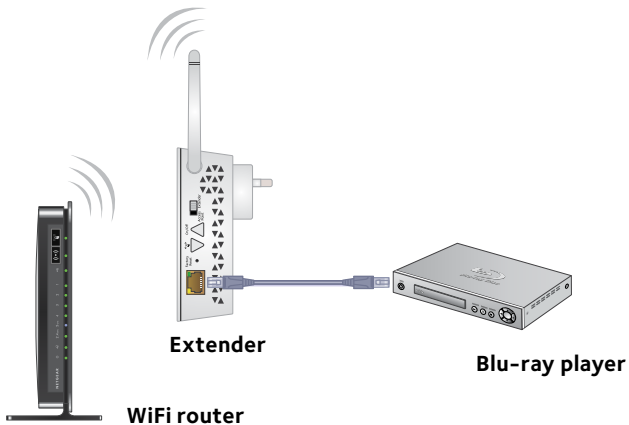


The location that you choose must be within the range of your existing WiFi router network.

15. Plug the extender into an electrical outlet and wait for the Power LED to light green.
16. Use the Router Link LED  to help you choose a spot where the extender-to-router connection is optimal.
17. If the Router Link LED doesn't light amber or green, plug the extender into an outlet closer to the router and try again.
Keep moving the extender to outlets closer to the router until the Router Link LED lights amber or green.
18. Reconnect your computer or WiFi device to the new extended WiFi network.
19. Test the extended WiFi range by moving your computer or WiFi device to the area with a poor router WiFi signal:
 - a. Leave your computer or WiFi device in the area with a poor router WiFi signal and return to the extender.
 - b. Check the Client Link LED  on the extender:
 - If the Client Link LED is solid green or amber, your extended WiFi network reaches the area with a poor router WiFi signal and your network setup is complete.
 - If the Client Link LED is red, your extended WiFi network does not reach the area with a poor router WiFi signal.
You must move the computer or WiFi device closer to the extender until the Client Link LED turns solid green or amber.

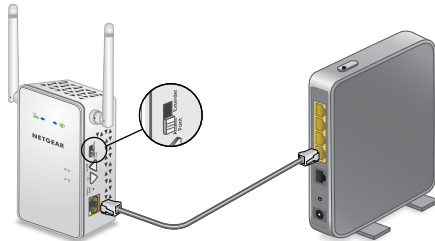
Connect Ethernet-Enabled Devices

After the extender is connected to your existing WiFi network, you can connect a device to the extender using an Ethernet cable. Then that device can access your existing network through the extender-to-router WiFi connection.




Use the Extender in Access Point Mode

You can use the extender as a WiFi access point, which creates a new WiFi hotspot by using a wired Ethernet connection.



1. Set the **Access Point/Extender** switch to the **Access Point** position.
2. Use an Ethernet cable to connect the Ethernet port on the extender to an Ethernet LAN port on a router or a remote Ethernet LAN jack with LAN access.
3. Plug the extender into an electrical outlet and wait for the Power LED to light green.
4. If the Power LED does not light, press the **Power On/Off** button.
5. Use a WiFi network manager on a computer or WiFi device to find and connect to the EX6100_NETGEAR_2GEXT or the EX6100_NETGEAR_5GEXT WiFi network.

After the connection with the computer or WiFi device is established, the Client Link LED («  ») lights.

6. Launch a web browser and enter **www.mywifiext.net** in the address field.

The New Extender Setup page displays.

7. Click the **NEW EXTENDER SETUP** button.

The Create Account page displays.

8. Complete the fields on the page to set up your login credentials and click the **NEXT** button.

9. Verify that the **Access Point/Extender** switch is set to **Access Point** and click the **Continue** button.

The extender checks for an Internet connection.

10. Click the **HOME NETWORK** or **PUBLIC NETWORK** button.

11. Set the network name (SSID), security option, and password for each access point network and click the **NEXT** button.

Your settings are applied and the extender is ready to be used as an access point.

12. Use a WiFi network manager on the computer or WiFi device to connect to the new access point WiFi network.

13. Click the **Continue** button.

A page displays that says you successfully created an access point.

14. Click the **Next** button.


The registration page displays.

15. Follow the onscreen instructions to register your extender.

Access Extender Settings

After installation, you can log in to the extender to view or change the extender's settings.

1. Use a WiFi network manager on a computer or WiFi device to find and connect to the new extended WiFi network.

After the connection with the computer or WiFi device is established, the Client Link LED () lights.

2. Launch a web browser.
3. Enter **www.mywifiext.net** in the address field of the browser.
A login window opens.
4. Enter your user name and password and click the **LOG IN** button.
The Status page displays.
5. Make any needed changes.

Frequently Asked Questions

You can find more information about your product in the user manual, which is available at <http://downloadcenter.netgear.com>.

The web browser setup keeps asking me for my network password (passphrase) or security key, and I am sure I entered the correct password. What can I do?

The extender is probably placed at the borderline of the range covered by the router or access point. For more information, see *Place the Extender and Apply Power* on page 5.

If you are using WEP security, make sure that you are typing the network password in the correct field.

Can I set up the extender in extender mode if I connect it to the router with an Ethernet cable?

No. The extender is designed to use WiFi to connect to the router or access point if it is in extender mode. If the extender is in access point mode, you can connect it to the router or access point with an Ethernet connection. For more information about access point mode, see *Use the Extender in Access Point Mode* on page 13.

I forgot my login user name and password. What can I do?

On the login page, click the **Username & Password Help** link to answer the security questions that you set up during the initial setup.

If you forgot the answers to your security questions, do the following to set up your login credentials again:

1. Restore the extender to its factory default settings.
2. Launch a web browser.
3. Enter **www.mywifiext.net** in the address field of the browser. The New Extender Setup page displays.
4. Click the **NEW EXTENDER SETUP** button.
5. When prompted, complete the fields on the page to set up your login credentials again.

How do I restore the extender to its factory default settings?

1. Use a sharp object such as a pen or straightened paper clip to press and hold the **Factory Reset** button on the extender for at least five seconds until the Power LED lights amber.
2. Release the **Factory Reset** button and wait for the extender to reboot.
The extender resets and returns to the factory default settings.

I am connected to the extender WiFi network and launched a browser. Why can't I see the web browser setup?

Try these troubleshooting steps:

- Make sure that your computer is set up to use DHCP (most are).
- Make sure that the Device Link LED is green and that you are using a valid IP address.
- Relaunch the web browser and type **www.mywifiext.net** in the address field. Type your user name and password and click the **LOG IN** button.

I enabled a WiFi MAC filter, WiFi access control, or access control list (ACL) on my router. What should I do when installing the extender?

When a device connects through the extender to your router, the MAC address of the device shown on the router is translated to another MAC address. If your router's MAC filter, WiFi access control, or ACL is enabled, the device connects to the extender but cannot get an IP address from the extender and cannot access the Internet.

To allow your device to receive an IP address from the extender and access the Internet, you must provide the translated MAC address to the router.

1. Log in to your router and disable the MAC filter, WiFi access control, or ACL.

For more information about how to disable your router's MAC filter, WiFi access control, or ACL, see your router's documentation.

2. Power on the extender and connect all of your WiFi devices to the extender network.
3. Make sure that the Router Link LED remains lit.
4. Log in to your extender:
 - a. Launch a web browser.
 - b. Enter **www.mywifiext.net** in the address field of the browser.
A login window opens.
 - c. Enter your user name and password and click the **LOG IN** button.
The Status page displays.
5. Select **Settings > Connected Devices**.
The Connected Devices section displays the MAC addresses and virtual MAC addresses for the computers and WiFi devices that are connected to the extender.
6. On the router, add the extender's virtual MAC addresses and all of the virtual MAC addresses of the devices connected to the extender to your router's MAC filter table.
7. Enable the router's MAC filter, WiFi access control, or ACL.

Support

Thank you for purchasing this NETGEAR product. You can visit www.netgear.com/support to register your product, get help, access the latest downloads and user manuals, and join our community. We recommend that you use only official NETGEAR support resources.

Trademarks

© NETGEAR, Inc., NETGEAR and the NETGEAR Logo are trademarks of NETGEAR, Inc. Any non-NETGEAR trademarks are used for reference purposes only.

Compliance

For the current EU Declaration of Conformity, visit:
http://support.netgear.com/app/answers/detail/a_id/11621/.

For regulatory compliance information, visit:
<http://www.netgear.com/about/regulatory/>.

See the regulatory compliance document before connecting the power supply.



201-17417-05

September 2015

NETGEAR, Inc.

350 East Plumeria Drive
San Jose, CA 95134, USA