

N150 Wireless ADSL2+ Modem Router

DGN1000

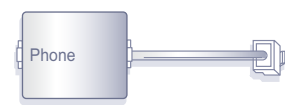
Package Contents:



Resource CD



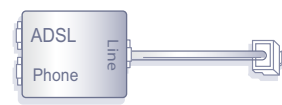
Modem router



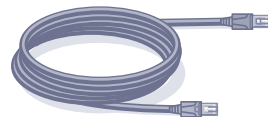
Filter



Splitter
(plug varies by country)



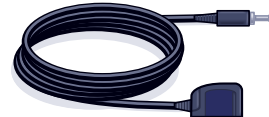
Filter/splitter



Telephone cable



Ethernet cable



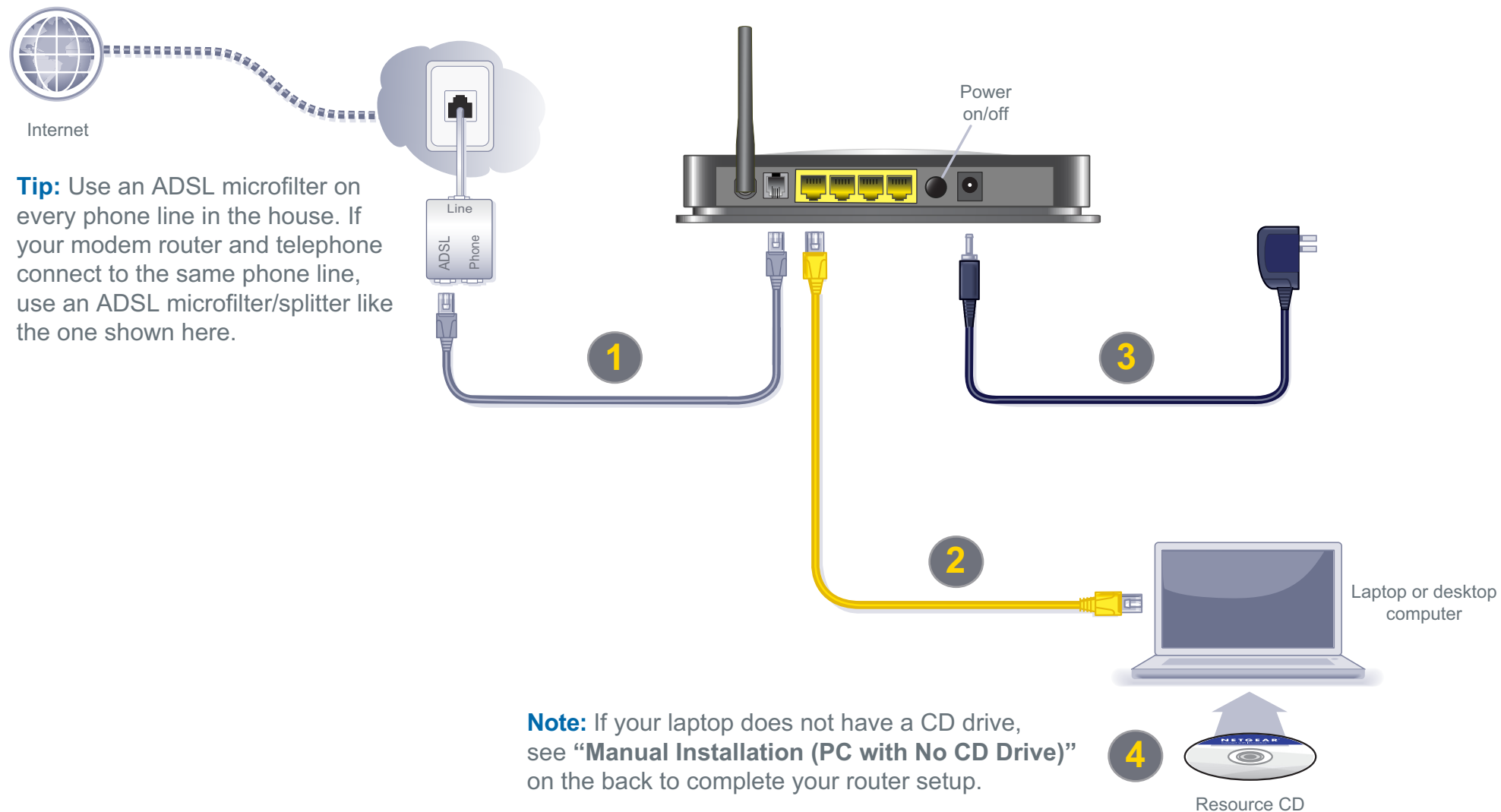
Power adapter



Internet

Tip: Use an ADSL microfilter on every phone line in the house. If your modem router and telephone connect to the same phone line, use an ADSL microfilter/splitter like the one shown here.

4-Step Cable Connection:



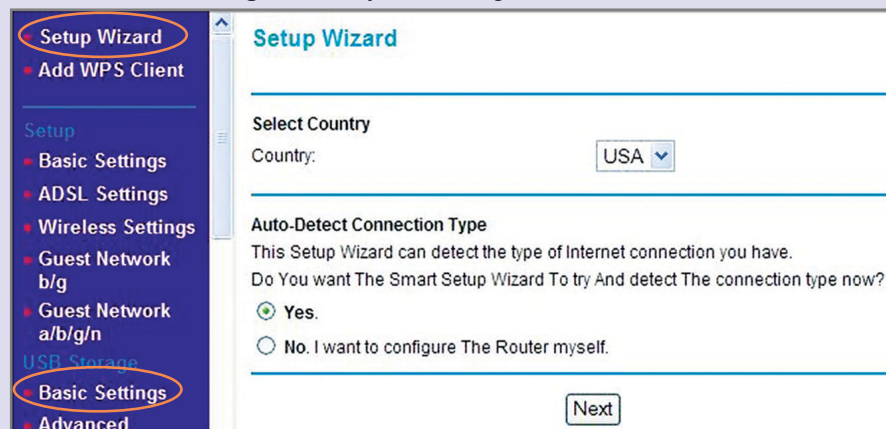
Note: If your laptop does not have a CD drive, see “Manual Installation (PC with No CD Drive)” on the back to complete your router setup.

Manual Installation (Linux, Mac, or PC with No CD Drive)

1. Follow Steps 1 - 3 to connect the DGN1000 modem router to your computer.
2. Check that the power LED is green, and if not, power on the modem router and wait for the power LED light to turn green.

Set up Internet Connectivity

1. Type <http://www.routerlogin.net> in the web browser address bar. Press **Enter**.
2. Type **admin** for the user name and **password** for the password. Click **OK**.
3. Select **Setup Wizard** in the top-left corner and make sure Yes is selected under Auto-Detect Connection Type. Click **Next** to complete the Setup Wizard.
4. Select **Basic Settings** to see your settings.



Note: If your Internet Service Provider (ISP) requires you to log in, enter your ISP login information when prompted. The ISP login is **not the same** as the router login. If you do not have your ISP login information, contact your ISP and record it here:

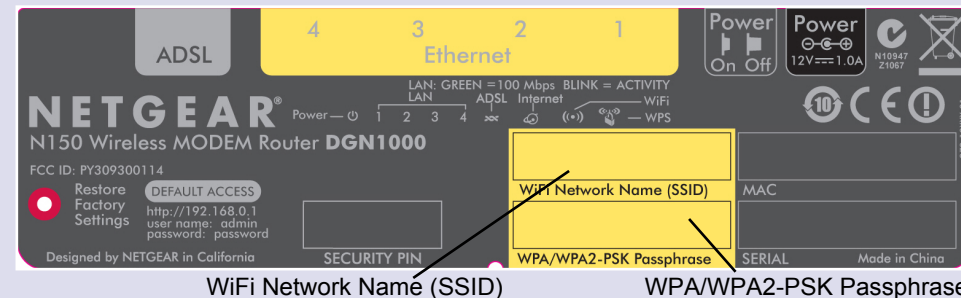
ISP user name: _____

ISP password: _____

Preset Wireless Security

This product has a preset unique Wifi Network Name (SSID) and WPA/WPA2-PSK passphrase that are located on the label on the bottom of the product. The default SSID and passphrase are uniquely generated for every device to protect and maximize your wireless security.

NETGEAR recommends that you do not change the WiFi Network Name (SSID) and WPA/WPA2-PAK passphrase. If you change these settings during the installation process, the information on the bottom of the product does not apply.



If you changed the default wireless settings, record them here:

Wireless Network Name (SSID) _____

Wireless Security Passphrase _____

To retrieve your passphrase, type <http://www.routerlogin.net> and log in with the user name **admin** and your password (default is **password**). Select **Wireless Settings** to retrieve your passphrase.

Connect Wireless Devices to Your Router


Choose either the manual or WiFi Protected Setup (WPS) method to add wireless devices and other equipment to your wireless network.

Manual Method

1. Open the software tool that manages your wireless connections on the device (laptop computer, gaming device, iPhone) that you want to connect to your router. This tool scans for all wireless networks in your area.
2. Look for your network and select it. If you did not change the name of your network during the setup process, look for the default WiFi Network Name (SSID) and select it. The default WiFi Network Name (SSID) is located on the product label on the bottom of the router.
3. Enter the passphrase and click **Connect**. The default passphrase is located on the product label on the bottom of the router.
4. Repeat steps 1 - 3 to add other wireless devices.

WPS Method

If your wireless device supports WPS (Push 'N' Connect), follow these steps:

1. Press the WPS button on the router. It looks similar to .
2. Within 2 minutes, press the WPS button on your wireless device, or follow the WPS instructions that came with your wireless device. The device is now connected to your router.
3. Repeat steps 1 - 2 to add other WPS wireless devices.

Note: WPS does not support WEP security. If you try to connect a WEP client to your network using WPS, it will not work.

For complete DoC please visit the NETGEAR EU Declarations of Conformity website at: http://kb.netgear.com/app/answers/detail/a_id/11621/



201-11934-04



January 2011



This symbol was placed in accordance with the European Union Directive 2002/96 on the Waste Electrical and Electronic Equipment (the WEEE Directive). If disposed of within the European Union, this product should be treated and recycled in accordance with the laws of your jurisdiction implementing the WEEE Directive.

©2010 by NETGEAR, Inc. All rights reserved. NETGEAR and the NETGEAR logo are registered trademarks of NETGEAR, Inc. in the United States and/or other countries. Other brand and product names are trademarks or registered trademarks of their respective holders. Information is subject to change without notice.