

## Start Here

This guide explains how to install the Digital Entertainer Elite using the basic setup; wired Ethernet LAN; and video cable and audio cable included in the package, HDMI, or SCART.

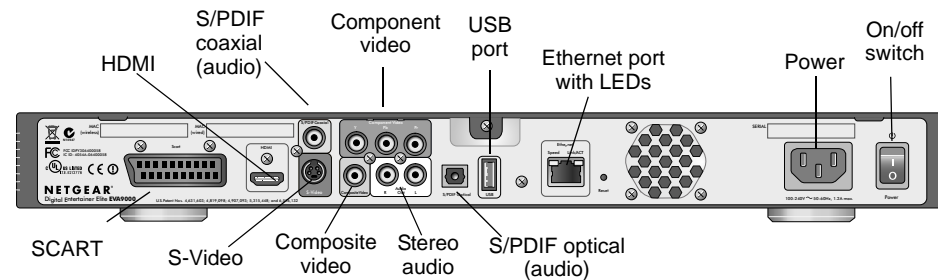
For wireless setup, custom setup, or component video connections, a *User Manual* is provided on your *NETGEAR Resource CD*, or download the latest documentation at <http://www.NETGEAR.com/support>.

Install your Digital Entertainer Elite in this order:

1. Connect the Digital Entertainer Elite.
2. Set up the Digital Entertainer Elite.
3. Install software on your computer with the *NETGEAR Resource CD*.
4. Configure your media library to work with the Digital Entertainer Elite.

## Connecting the Digital Entertainer Elite

The figure below shows the rear view of the Digital Entertainer Elite EVA9000/9150.



To connect the Digital Entertainer Elite:

1. Connect the Digital Entertainer Elite to your TV set and audio equipment. If you use a digital audio/visual (a/v) receiver, use an S/PDIF coaxial or optical cable to connect it.
2. Connect the Digital Entertainer Elite to the router with an Ethernet cable.

3. Connect the Digital Entertainer Elite power cord, and plug it into an outlet. Make sure the on/off switch is set to on.

The LED on the front of the Digital Entertainer Elite lights up to show that it is powered on.

4. Install the two AA batteries into the remote control that shipped with the product.

## Setting Up the Digital Entertainer Elite

To set up the Digital Entertainer Elite:

1. Turn on the TV.
2. Set the video source selector on your TV to match the connection from your Digital Entertainer Elite. For example, if you used HDMI, set the TV to use **Digital HD** or **HDMI** input.

**Note:** If your TV has multiple inputs of a specific type (such as HDMI1 or HDMI2), make sure that you have selected the correctly numbered input.

3. Check the TV display. If it is not clear, aim the remote control at the Digital Entertainer Elite, and press **TV Mode**. You can cycle through the TV modes to get the best display. It can take 3 or 4 seconds for each TV mode change.
4. As part of the initial setup, you are prompted to select a language.
5. When you hear the audio welcome message, press **OK**.

If you do not hear the audio welcome message, check the connections to the Digital Entertainer Elite.

6. Select **Basic Setup**, and then set up the TV resolution.
7. Depending on where you bought your Digital Entertainer Elite, you might be prompted to enter your zip code or to choose your country and nearest city.

If you want to receive news and weather, enter your zip code. Press the **down arrow** when you are finished, and then press **OK**.

8. When prompted to install software, go to the computer where your media files are stored.

## Installing the NETGEAR Digital Entertainer for Windows Software

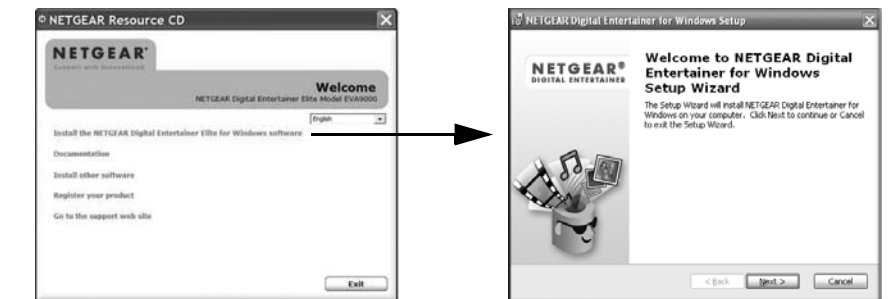
After connecting the Digital Entertainer Elite and completing basic setup, follow these steps to install the software:

1. Power on your computer, and log in as needed.
2. Insert the *NETGEAR Resource CD* into the CD drive on the computer.

The Welcome screen opens. If you do not see the Welcome screen, browse the files on your CD, and then click **Setup**.

3. Select **Install the NETGEAR Digital Entertainer for Windows software**.

The Setup Wizard starts.



4. Follow the Setup Wizard steps to accept the licence and install the software.
5. After the Setup Wizard steps are finished, click **Configure** to use the Configuration Wizard.



## Configuring Your Media Library

Use the Configuration Wizard to set up your media library to work with the Digital Entertainer Elite. Follow these steps:

1. Click **Next** to begin.

The Configuration Wizard prompts you to select media folders to be shared. This will allow the Digital Entertainer Elite to access these files.

2. Browse and select the folders that you want, and then click **Next**.

The Configuration Wizard is ready to configure your Digital Entertainer Elite and displays this screen:

3. For some firewalls, specific ports must be opened so that the Digital Entertainer Elite can access media files on your computer. If prompted, select **Allow** or **Unblock** to allow the access.

4. Click **Next**, and follow the onscreen instructions to select your media folders.
5. When you are finished, go to your TV.

Your Digital Entertainer Elite is ready to use. The main menu displays. For more information about using the Digital Entertainer Elite, a *User Manual* is provided on your *NETGEAR Resource CD*, or download the latest documentation at <http://www.NETGEAR.com/support>.

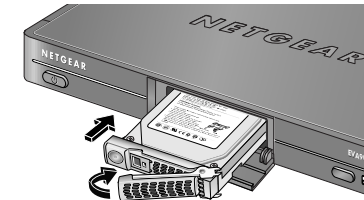
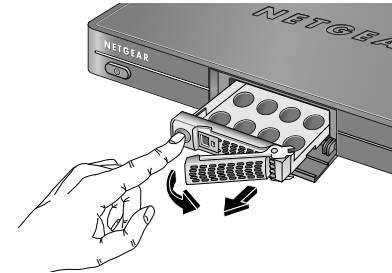


## Installing an Internal Disk Drive (Optional)

The EVA9150 comes with a pre-installed hard disk drive, which is ready to use out of the box. To install an optional disk drive on either Digital Entertainer Elite model, carefully follow these instructions.

**Warning:** The installation process formats the hard drive and erases all existing data. Before you begin, back up any existing data, if necessary.

1. Remove the disk tray from the unit.
  - a. Swing open the front cover.
  - b. Press to release the latch.
  - c. Pull out the tray.
2. For the EVA9150 only, remove the pre-installed hard disk from the tray, remove the four screws that secure it, and put the just-removed hard disk in a safe place.
3. Insert a hard drive into the tray. Position the drive with the bottom facing out from the tray, and the connectors facing away.
4. Use the four screws provided with the unit to secure the drive to the tray.
5. With the latch in the open position, slide the disk tray into the Digital Entertainer Elite completely, securing the latch and closing the door.
6. Consult the *User Manual* on your *NETGEAR Resource CD* for instructions on using the drive.



## Safety Information

Please read and follow this important information, especially those instructions related to the risk of electric shock or injury to persons.



**Warning:** To reduce the risk of electric shock, do not remove the cover. There are no user serviceable parts inside.



**Warning:** This device can display static images, which can cause “burn-in” of certain displays. Avoid leaving static images (such as photos or paused videos) onscreen for long periods of time.



**Warning:** There are no user-serviceable fuses. To avoid fire hazard, use only the specified fuses with the correct type number, voltage, and current ratings as referenced in the service instructions or on the equipment. Fuses should be replaced only by qualified service personnel.



**Warning:** This device should be used only indoors in well-ventilated areas. To reduce the risk of fire, electric shock, or interference, do not expose this appliance to moisture or rain, and use only the recommended accessories.

## Technical Support

Thank you for selecting NETGEAR products. After completing the installation, register your product at <http://www.NETGEAR.com/register>. For product updates and Web support go to <http://www.NETGEAR.com/support>.



This symbol was placed in accordance with the European Union Directive 2002/96 on the Waste Electrical and Electronic Equipment (the WEEE Directive). If disposed of within the European Union, this product should be treated and recycled in accordance with the laws of your jurisdiction implementing the WEEE Directive.

© 2009 by NETGEAR, Inc. All rights reserved. NETGEAR and the NETGEAR logo are registered trademarks of NETGEAR, Inc. in the United States and/or other countries. Other brand and product names are trademarks or registered trademarks of their respective holders. Information is subject to change without notice.



201-11698-01



March 27, 2009